



## VEHICLE SPECIFICATION

### Vehicle / Chassis

#### Scania P280 DB 4x2 MNA

- CP28 all-steel 6-man crew cab
- Wheelbase: 4.3m
- Allison 6-speed auto gearbox fitted with integral retarder
- Factory fitted air-con
- Top mount Chelsea PTO
- Tyres: Bridgestone 275/70 22.5 steer pattern to front and rear
- Driving lamps to sun visor
- Fog / spot lamps to bumper
- Additional air tank for auxiliary equipment
- Internal roof / wiring inspection hatches
- Fixed steps to crew cab
- Electric cab tilt pump interlocked with ladder head gantry
- Thoreb can bus system for all blue light equipment to include reverse camera, data logger, battery guard, GPS, GRS with internal identification screen to show door ajar, seat belt monitor, ladder stowage, light mast, locker open, engine emergency stop activation, and function of all lighting with test facility
- Griptone external slave start socket fitted to o/side

### Other information

The vehicle has been subject to VCA tilt test and VCA approval to BS/EN 1846-22009 and was approved on 7th of December 2011.

All enquiries, contact our office on UK +44 (0)1302 954007

Continued...



## Cab

- Paintwork: Post Office Red with 3m diamond battenburg to cab sides by PVL
- Factory approved crew seating with internal / universal BA stowage with RED seat belts and individual warning, with under-seat equipment stowage
- One-piece Strong's Polypropylene breakfast bar with fire helmet stowage and stowage to top
- Self eject 240-volt charge socket fitted to o/side of cab
- High intensity courtesy lighting to all cab doors
- LudoMcGurk 24/12v Euro charger
- On-board auxiliary compressor with auto-drain system
- Woodway freedom light bar with 100w siren with direct air supply
- Priority air horns with change-over, controlled from OIC and driver
- Anti bandit glass to all doors

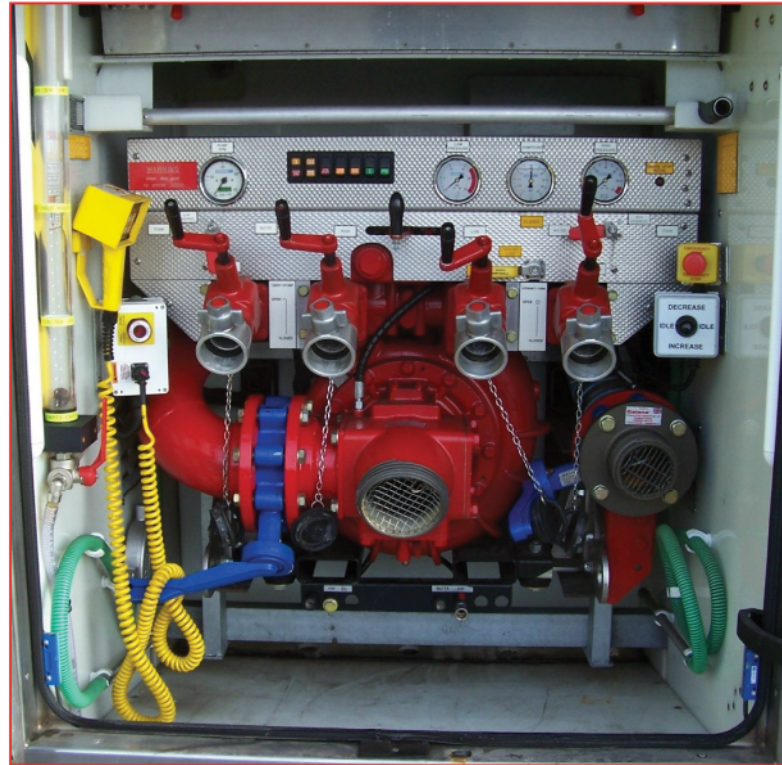
## Body

- Strong's Co Polymer all one-piece body with fully galvanised sub-frame to chassis
- 1800-litre integral water tank fitted with capacity sight glass to pump bay
- BA cylinder and equipment tubes fitted to n/s and o/s with driver PPE stowage to n/s front
- J R Industries roller shutters to side lockers with full doors to pump bay
- Maple failsafe body locks
- 3m Battenburg to shutters
- Side marker lamps and indicator repeaters fitted to n/s and o/s
- All around blue fend off LED lighting to n/s and o/s with blue/red to rear
- Labcraft scene lighting to cab and body with LED locker illumination
- Centre locker high mount Reel Care hose; reel fitted with Premier Hose

- 2Ltr Transvend water heater fitted to o/s front locker
- Accuride tray slide runners with assortment of tilt and slide trays
- 3-section header panels for access to roller shutters for maintenance

## On top

- Will-Burt Night Scan HID metal halide mast light with pump bay control
- 13.5/10.5 ladder roller system
- Anderson roof/triple ladder gantry fitted to o/s
- Hatch to water tank



## Pump Bay

- 4010 Godiva centrifugal pump with 4 deliveries
- 3 Galena collecting head
- Galena hose reel 3% foam inducers
- Fixed manual pump to tank cooling loop
- PTO engagement
- Engine shut-down and re-start
- Cab/body locking
- Rear suspension dump
- Low fuel warning
- Joystick throttle control with return to idle, increase, decrease facility
- Tank to pump manual control valve
- Hyd to tank manual control valve fitted with 2-way collecting head
- Stowage of 2x10' suction hoses
- Triple ladder stowage

